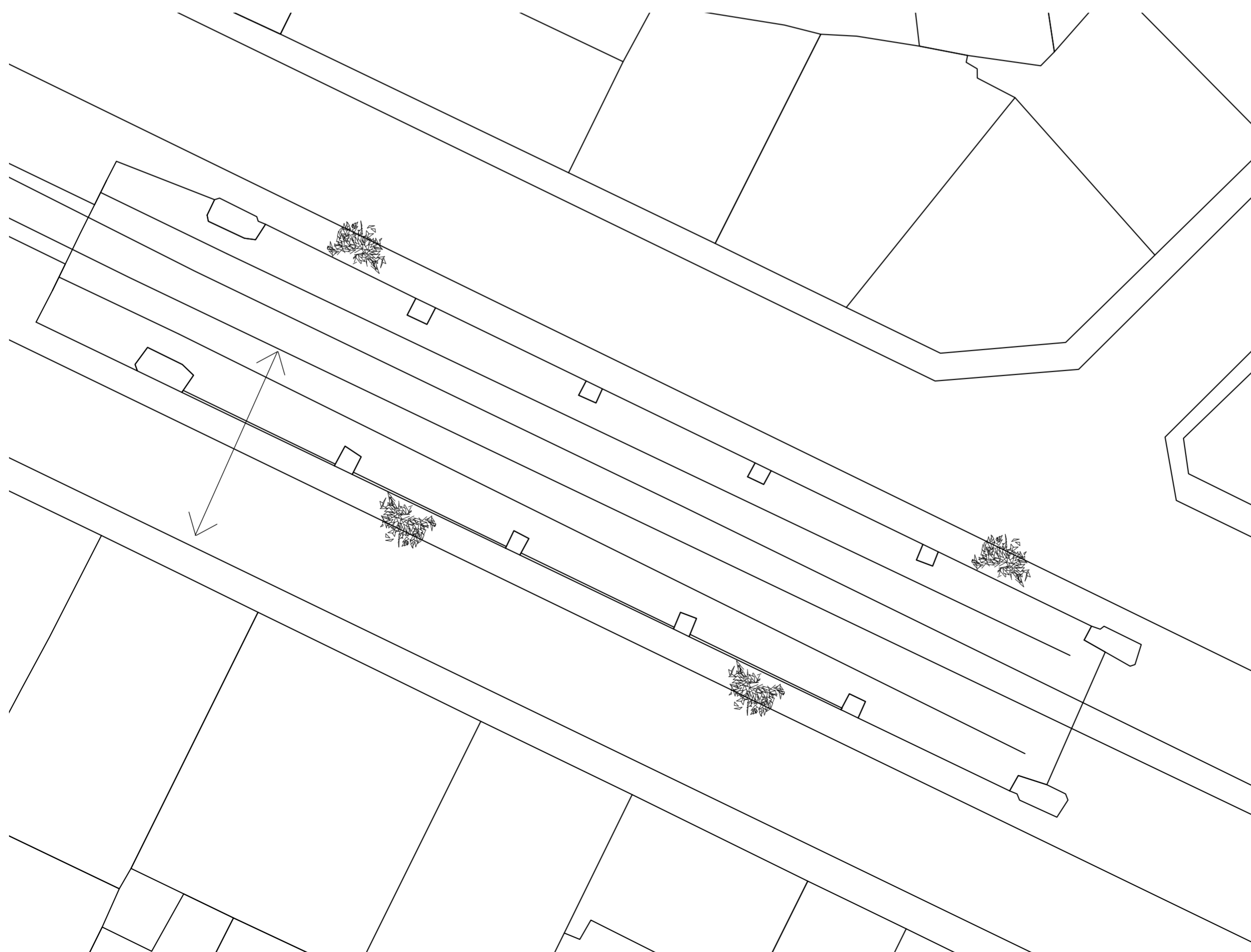


DUPLEIX, PARIS

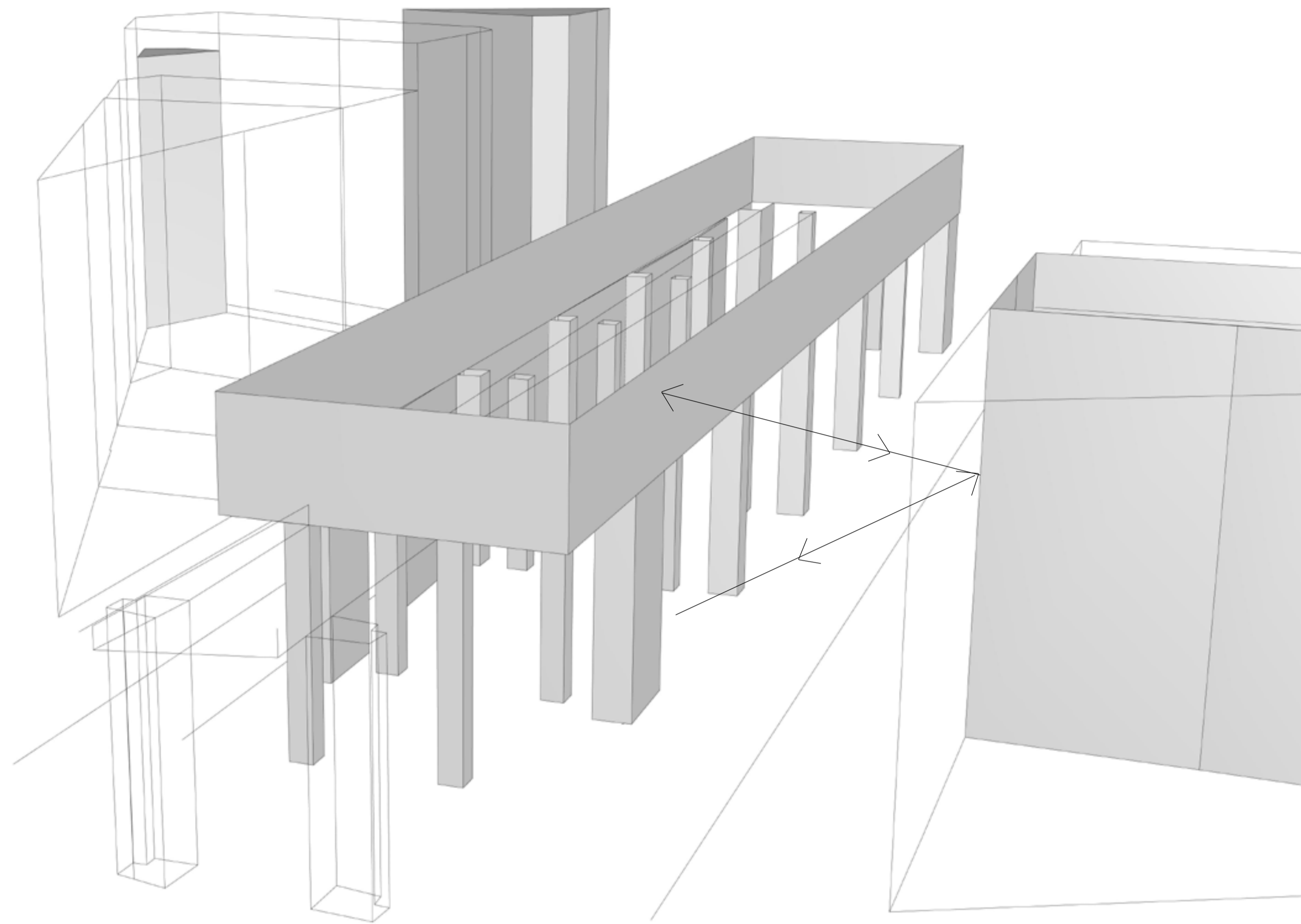
IDEA: PLACE MIRRORS UNDER A METRO RAILWAY TO MAKE IT MORE WELCOMING FOR PEDESTRIANS + COVER THE FRONT OF A BUILDING WITH MIRRORS SO PEOPLE UNDER THE BRIDGE AS WELL AS THE ONES IN THE STATION ABOVE CAN SEE EACH OTHER THROUGH THEIR REFLECTION.



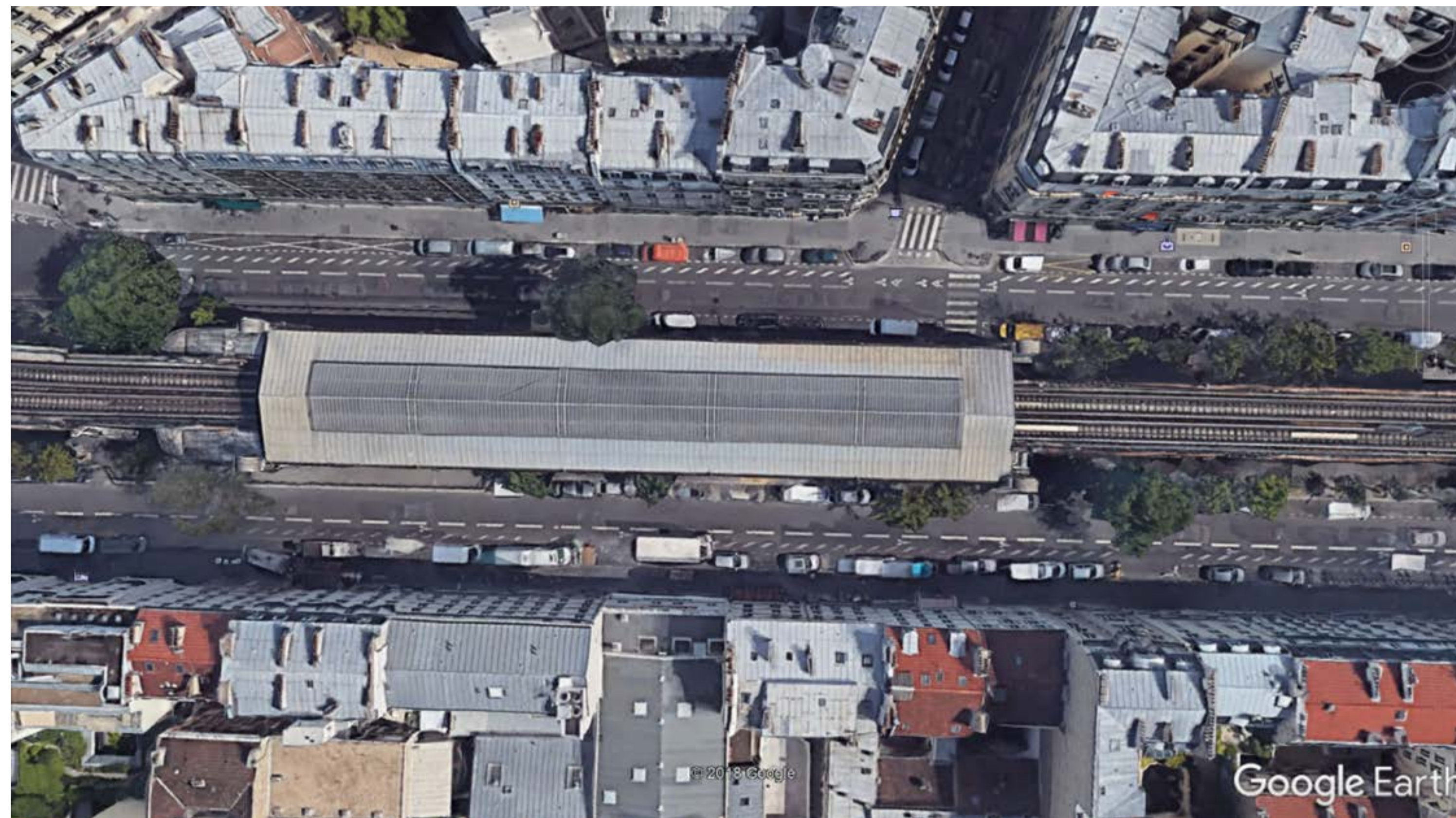
STREET LEVEL SCALE 1/333



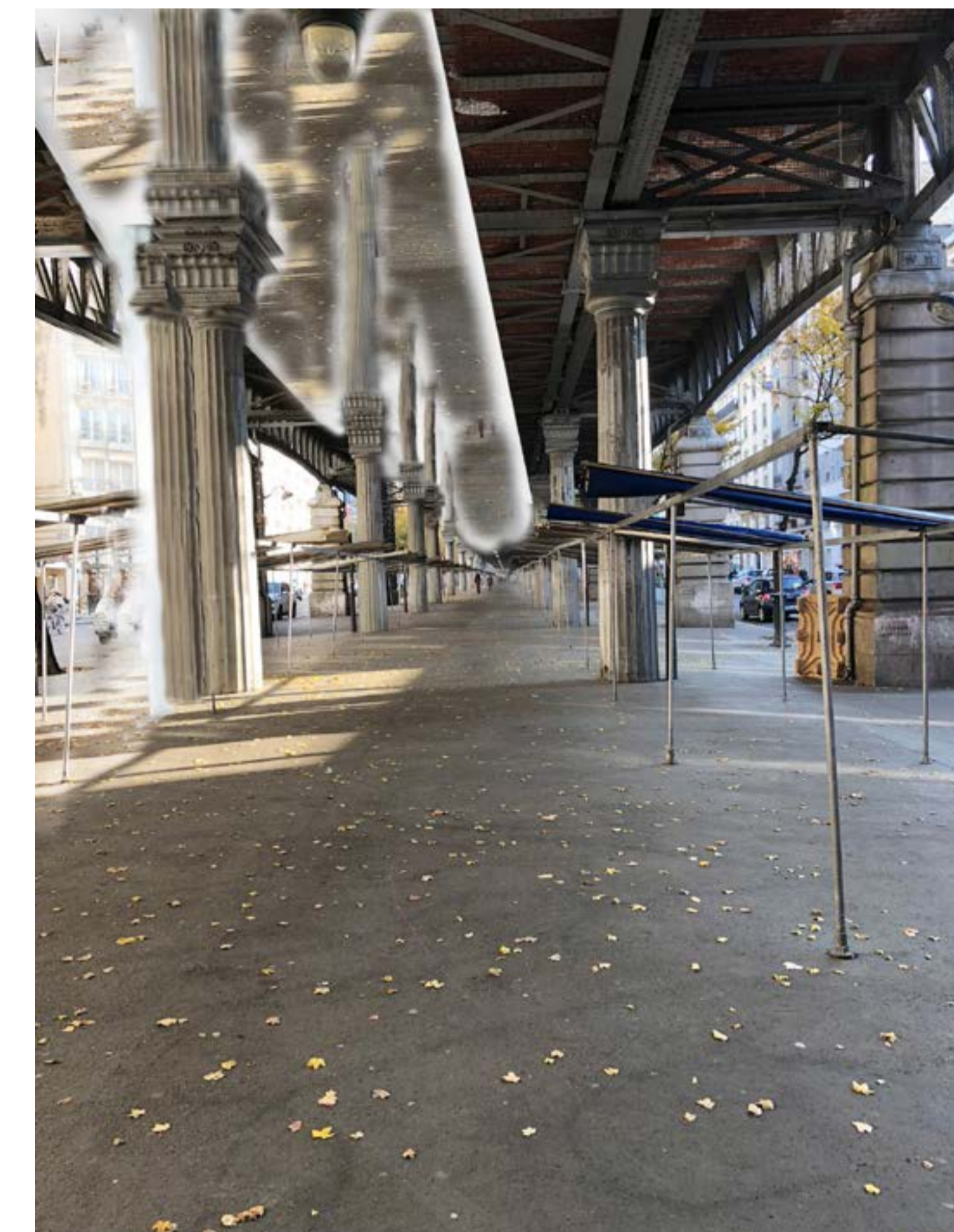
METRO STATION FLOOR SCALE 1/333



MIRROR EFFECT BETWEEN STREET LEVEL AND THE METRO STATION ABOVE



BEFORE



AFTER

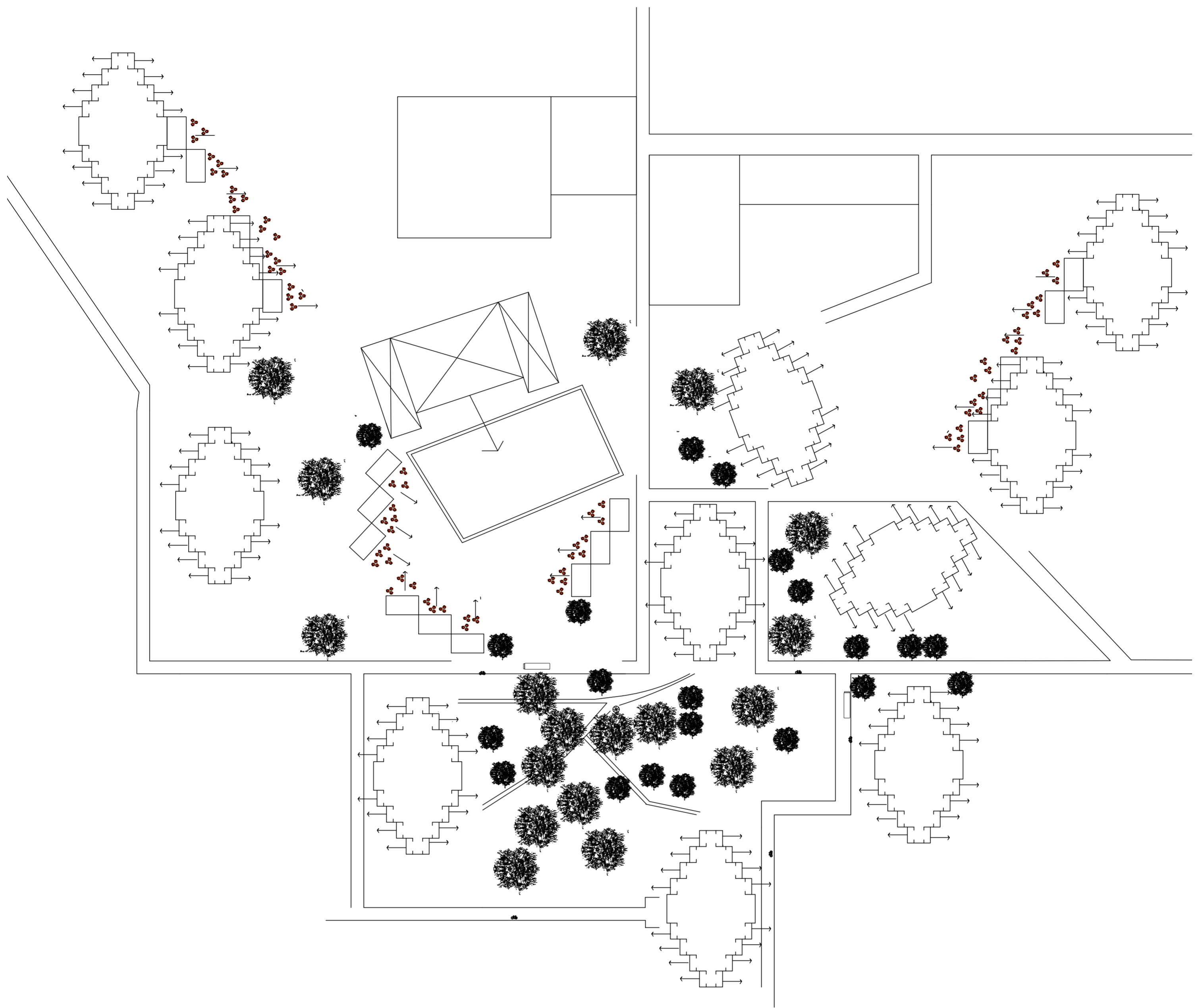


BEFORE



AFTER

MIRROR CITY



SCALE 1/900

LAURENE HILLION
P21 - ATELIER ELISABETH LEMERCIER